

# COMUÁ FOR CLIMATE



An advocacy action seeking to strengthen the position and the work of the organizations that make up the Comuá Network in the field of climate philanthropy. Its goal is to promote the construction of collective strategies, reinforcing its strategic role in financing **Locally-led Climate Solutions (LCSs)** in various Brazilian territories and biomes.

comuá

rede comuá  
filantropia que  
transforma



## Locally-led Climate Solutions (LCSs)

Solutions created by and for the communities, based on the particularities of the territories and groups involved, aimed at strengthening collective action in defense of rights, including a variety of approaches, such as:



**Adaptation:** Developing strategies and actions to deal with the impacts of climate change.



**Mitigation:** Implementing actions to reduce greenhouse gas emissions locally, involving renewable energies and energy efficiency.



**Conservation and Restoration:** Protecting and restoring local ecosystems that play a crucial role in absorbing carbon and protecting against natural disasters.



**Education and Awareness-Raising:** Raising awareness of climate change and its effects.



**Technological Innovation:** Development and implementation of technologies adapted to local needs.



**Community Reinforcement:** Advancement and active participation of strategic groups in the decision-making process concerning the environment and adaptation to climate change, ensuring an inclusive approach.



## Principles guiding the work done by the Comuá organizations in the support and development of LCSs



**Climate justice:** puts equity and human rights at the core of the decision-making and definition of the actions to be implemented.

**Intersectionality:** the intersectional approach emphasizes the diverse relationships of different subjects and groups to climate change, which historically affects marginalized groups (women, black people, traditional communities and LGBTQIAPN+ people) unevenly and more severely. Issues such as race, gender, social class, age, geographic location (among others) are crucial to the determination of appropriate actions in the field of LCSs.

**Human rights approach:** ensures the inclusion of the most vulnerable groups. This means that mitigation, adaptation, and climate finance strategies are focused on reducing poverty, strengthening human rights, and improving health and well-being.

**Community philanthropy:** recognizes the leading role of civil society organizations and collectives, their transformative power, and their ability to search for solutions to the problems they face. This form of philanthropy is made with and for grassroots community movements and groups that play a crucial role in regulating the planet's climate.

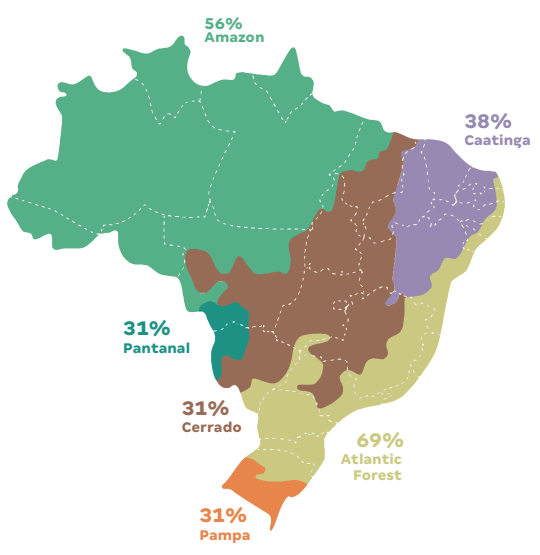


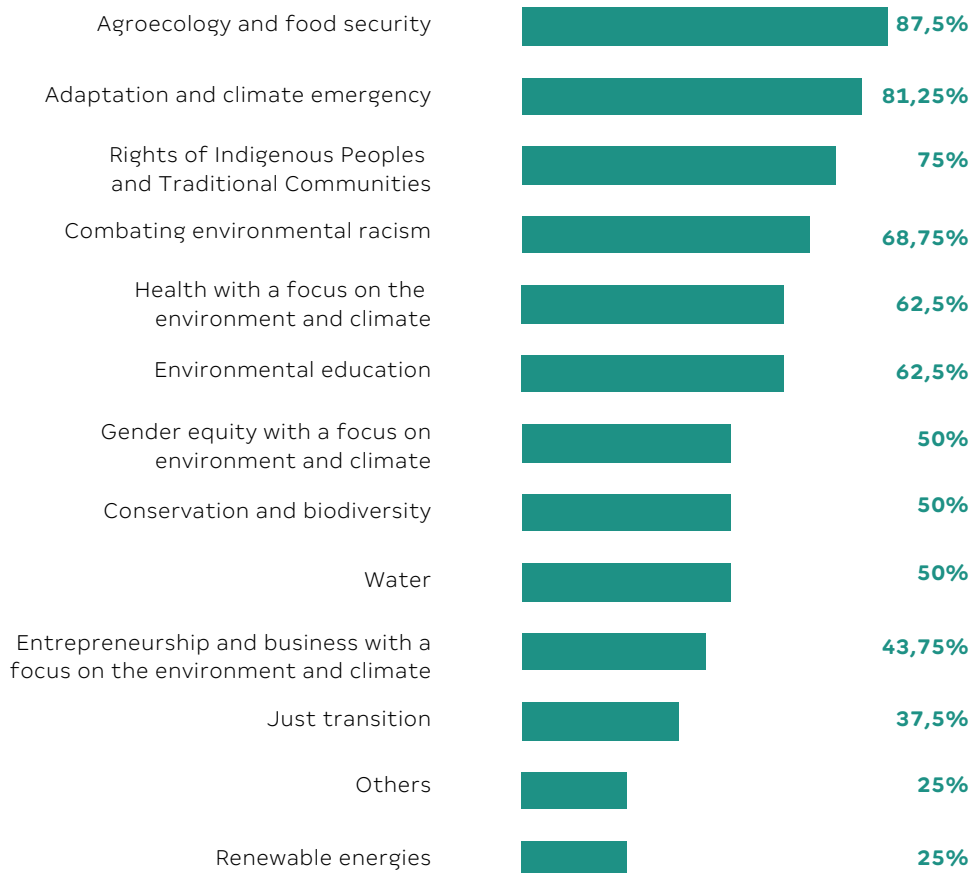
## Comuá members' role in climate finance

All **Comuá** member organizations are committed, at varying degrees, to fighting climate change.

The Network members' climate action initiatives are widespread, reaching **several territories**, but concentrated mostly in peripheral urban areas (56%), rural areas, Indigenous lands and quilombola territories (50% each).

The Network's members are active in all **Brazilian biomes**, especially the **Atlantic Forest (69%)** and the **Amazon (56%)**, which shows their commitment to defending biodiversity and local communities.

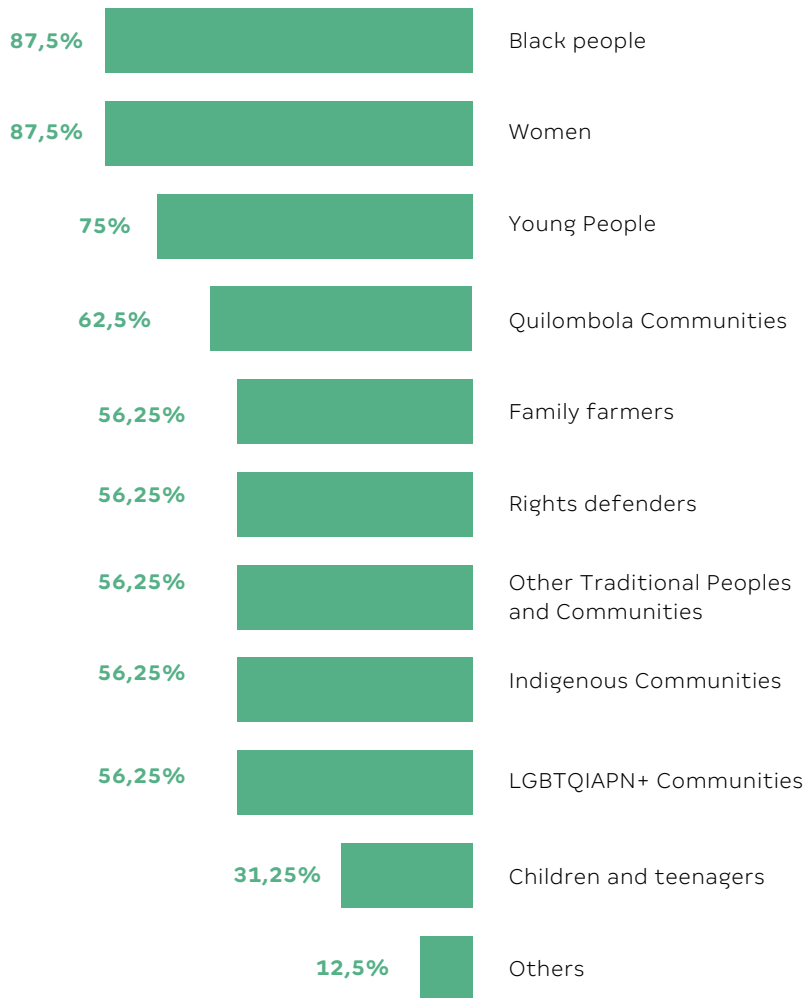




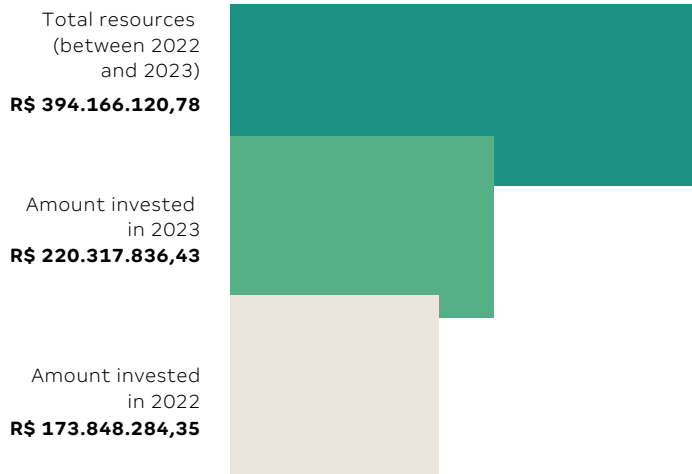
For **70%** of the members, the priority areas of action are agroecology, food security, climate adaptation and emergencies, as well as the rights of indigenous peoples and traditional communities.

## **50% to 70%**

also work with water and water resource management, conservation and biodiversity, environmental education, health (with a focus on the environment and climate), in addition to fighting environmental racism and advocating for gender equality.



**70%** of the member organizations support primarily **actions focusing on women, black people and young people**, while more than 50% prioritize **LGBTQIAPN+ groups, Traditional Peoples and Communities, Rights Advocates and Family Farmers.**



**81%** of the members have raised their investment in the climate agenda. **Between 2022 and 2023, more than 300 million reais were invested by the Comuá organizations in climate justice initiatives.**

**More than 70% of the members have financed training activities and the direct support of projects and organizations (donating resources/grantmaking).**

More than 900 groups and over one million people have been reached directly.





The organizations of the **Comuá Network** are strategic players in the field of climate philanthropy in Brazil, as they contribute to democratizing access to financial resources so that the resilience capacity of countless grassroots groups can be strengthened.

106 Locally-led Climate Solutions implemented and/or supported by members of the Comuá Network were mapped through a variety of strategies, including the production of knowledge, advocacy actions and financial support to civil society organizations and groups, with a focus on:



**Advocating for and encouraging Conservation and Biodiversity (20.6%)**

**Supporting projects related to *bem viver* (“good living”, in English) (18%), mainly focused on gender (women and LGBTQIAPN+ people), securing the rights of traditional peoples and communities.**



**Climate Resilience and Adaptation (19.6%)**

The members develop solutions directly related to environmental and climate education, to encourage the sustainable use and management of natural resources, such as water management and energy efficiency (3.9%).

At a later stage, the Comuá Network intends to compile and consolidate a database of more than 100 LCSs supported and/or developed by its members, organized by areas of activity, target audiences, strategies developed, biomes, geographic areas, etc.

# Comuá for Climate

## **Research and production**

CLIMÁTICA Consultoria

Priscilla Santos, Rayana Burgos and Sâmara Oliveira

## **General Coordinator**

Graciela Hopstein and Jonathas Azevedo

## **Production and Review**

Mônica Ribeiro

## **Layout and Graphic Design**

Marina Castilho

## **Acknowledgments**

Comuá Network members who provided critical guidance, perspectives, and ideas, with special thanks to Graciela Hopstein (Executive Coordinator) and Jonathas Azevedo (Program Advisor) throughout the process.

# Comuá Network

## Executive Team

Graciela Hopstein  
*Executive Director*

Jonathas Azevedo  
*Program Advisor*

Mica Peres  
*Operations Coordinator*

Mônica Ribeiro  
*Communications Coordinator*

Wanda Alves  
*Operations and finance assistant*

Yasmin Morais  
*Program Advisor*

## Governance Board

Ana Valéria Araújo  
*Executive Director - Fundo Brasil*

Giovanni Harvey  
*Executive Director - Fundo Baobá  
para Equidade Racial*

Larissa Amorim  
*Executive Coordinator - Casa  
Fluminense*

Roberto Vilela  
*Executive Director - Tabôa  
Fortalecimento Comunitário*

## Audit Committee

Gislene Aniceto  
*General Manager - Fundo Brasil*

Hebe da Silva  
*Administrative and Financial  
Coordinator - Fundo Baobá  
para Equidade Racial*



**comuá**

rede comuá  
filantropia que  
transforma